

P Series

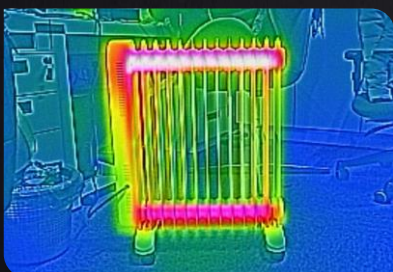
Pocket-sized Thermal Camera

Compact Size, Professional Grade



Introduction

P120V Pocket-sized Thermal Camera designed for electrical equipment maintenance and building inspection, which can fast detect the potential problems, report repair data and share images by Wi-Fi. It is a truly handy thermal camera that fits in your pockets for fast and accurate thermal inspections anytime. P120V featured with 3.5-inch LCD touchscreen for simple operation, and support picture-in-picture, smooth zoom, max and min temperature alarm, Cloud Service and more.



Features and Benefits

- -20°C-400°C wide measurement range
Auto switching between -20°C-150°C and 100°C-400°C
- Reasonable Layout and Good Ergonomic Design
No interfere between lens area and grip area
- 3.5" Touchscreen Display
High-brightness LCD, 320 x 240 pixels
- Android Platform, Intelligent Operation
User-friendly design based on Android system, which is as simple as using a smartphone.
- Wi-Fi connectivity , support Cloud Service
Wi-Fi connectivity enabled for remote control and instant sharing. And support Cloud Album, you can back up the images to the Cloud in real-time.

Application

- Building Diagnostics
- Facilities maintenance
- HVAC Inspection
- Electrical Application

Specifications

Model	P120V
IR image & Optical	
Detector type	120×90@17μm, VOx
Spectral	7.5~14μm
Frame Rate	15Hz/9Hz
Thermal Sensitivity / NETD	60 mk
Focal Length	2.28mm/F1.13
Field of view(FOV)	50°×38°
Spatial Resolution(IFOV)	7.6mrad
D:S	130:1
Focus	Focus-free
Visible Camera	
Visible Camera Resolution	640×480, Focus-free
Flashlight	Yes (on/off/flash)
Image Display	
Display	3.5" LCD touchscreen display
Display Resolution	320×240
Image modes	IR, Visible, Picture-in-Picture, MIF
Color Palettes	6:Hot Iron, Black Heat, Heat Iron, White Heat, Medical, Arctic
Digital zoom	Smooth zoom, up to 8X
Level Span	Auto, Semi-automatic, Manual
Temperature Measurement	
Measurement Range	-20°C-150°C, 100°C-400°C (Auto switching)
Accuracy	±2°C or ±2%, whichever is greater (target temp ≥0°C, ambient temp is 15°C ~ 30°C)
Measurement Spot	Center spot, and can add one removable measurement spot
Measurement Area	Can add one removable area measurment box
Auto Max & Min Temp Tracking	Full screen auto max & min temp. tracking
	Analysis target (area) max & min temp. tracking
Full Screen Max & Min Temp. Alarm	Yes
Image Storage	
Storage Media	4G Internal memory, at least 500 sets of images
IR Image Format	Full Radiometric (JPG)
Visible Image	Yes
Connections & Communications	
USB	Type-C, for image data transmission with PC
WIFI	Yes, Wi-Fi enabled for data transmission
Mobile APP	Yes, and support Cloud Service
PC IR Analysis Software	Yes
Power system	
Battery Tpye	Built-in rechargeable li-thium battery, non- removable
Battery Operating Time	≥2 hours (when wifi-off)
Charging Time	≤1.5 hours
Environmental parameters	
Operating Temperature	-10°C~50°C
Storage Temperature	-40°C~70°C
Encapsulation	IP54, 1-meter drop test
Certification	CE, FCC, ROHS
Weight	240g
Size	133mm×87mm×24mm
Standard Accessories	Charger + Adapter, TYPE-C USB cable, Wrist Strap, Pouch, Quick start Guide, Data Download Card

